



Innlandet-Dalarna

Border Committee

Cross border vocational high quality education

Innlandet Dalarna

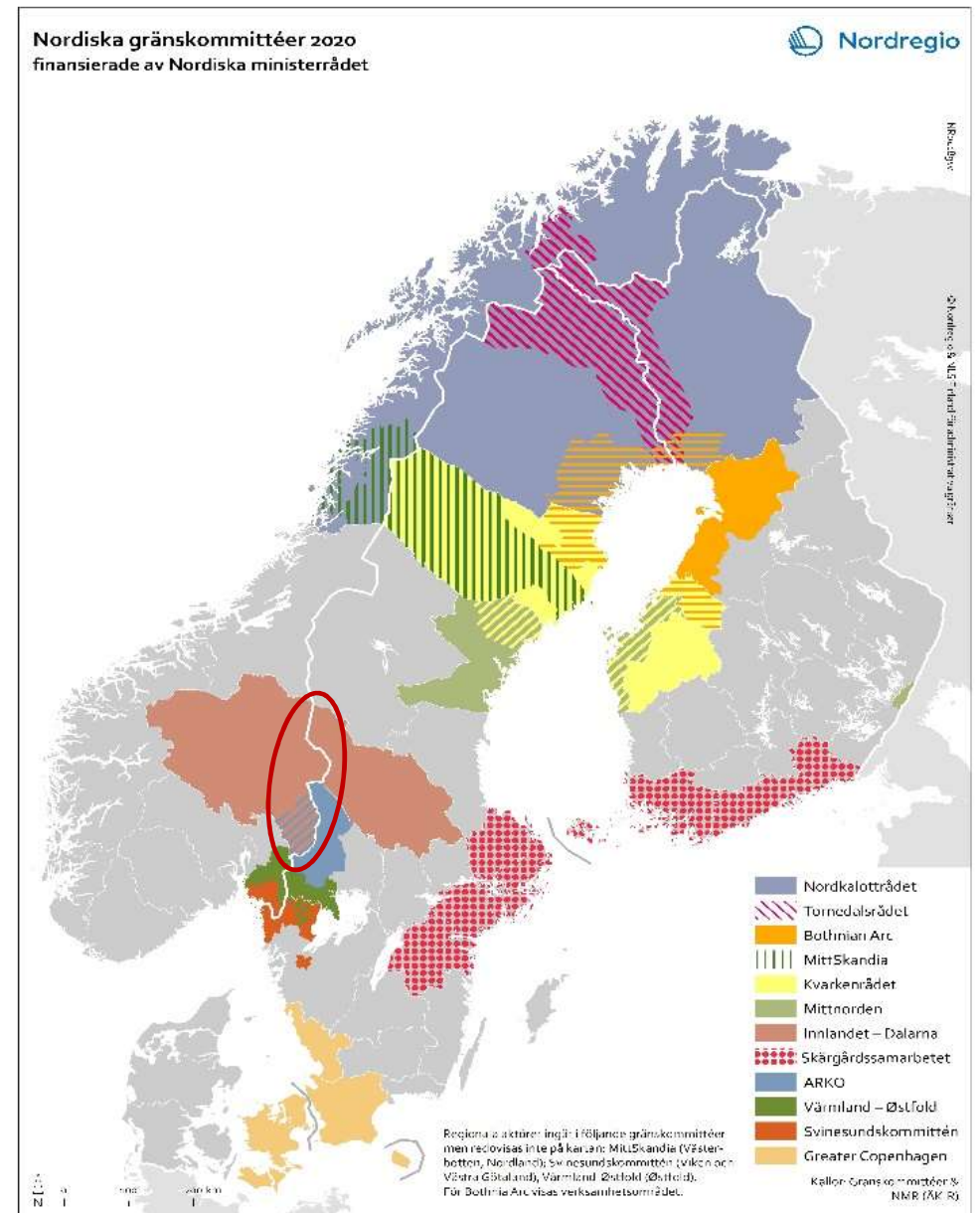
Border Committee

County Administrative Boards of
Dalarna and Innlandet

County Development Board
Dalarna and Innlandet

- Green Transition
- Labour market
- Development strategies
- Place management

Supported by the Nordic Council
of ministers



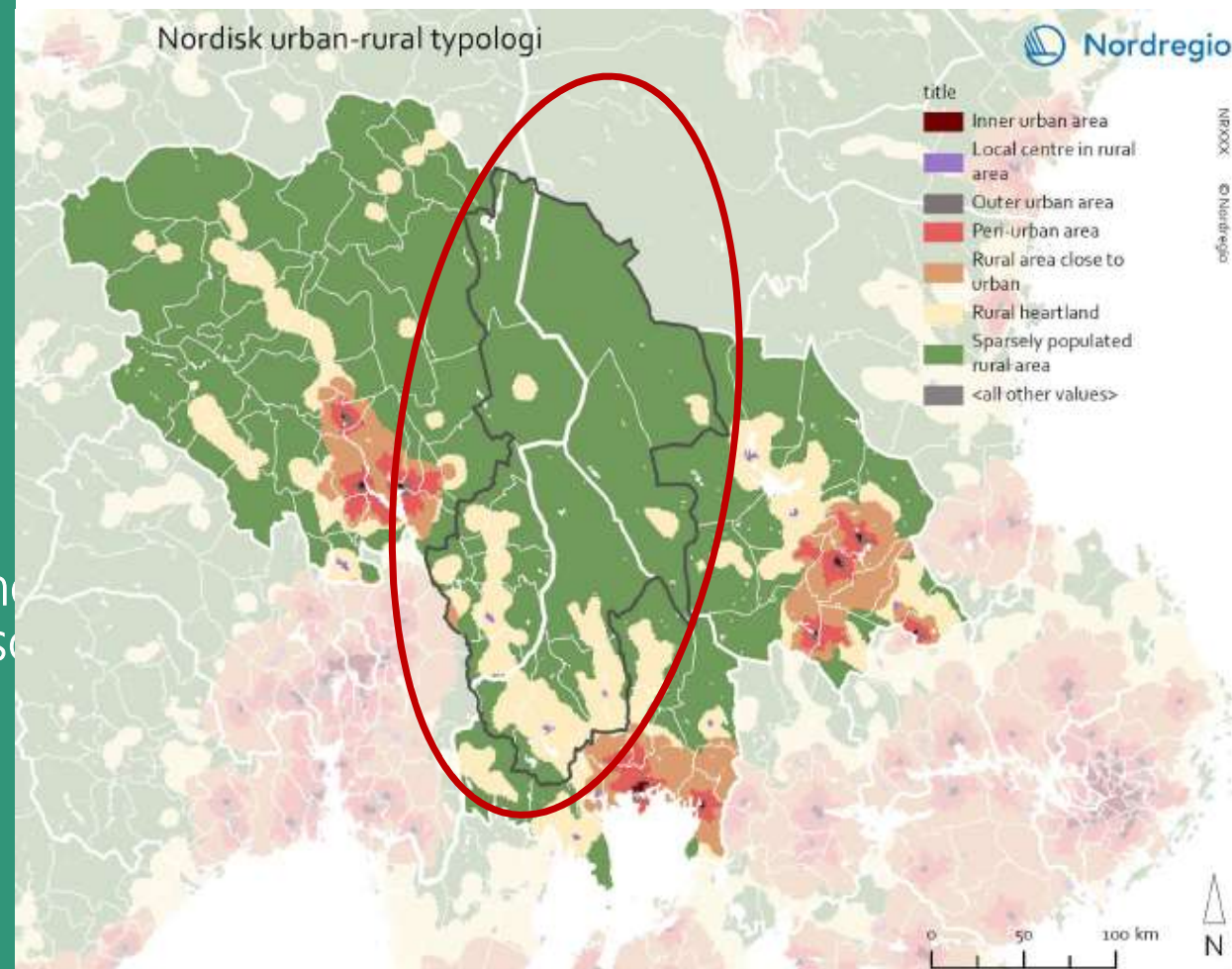
Innlandet Dalarna

Sparcely populated: 4,8 inh/km²

High touristic activity:
+ 40 – 60.000 beds until 2030

Increasing multi living / second home
+ 200-400% population during season

Low unemployment

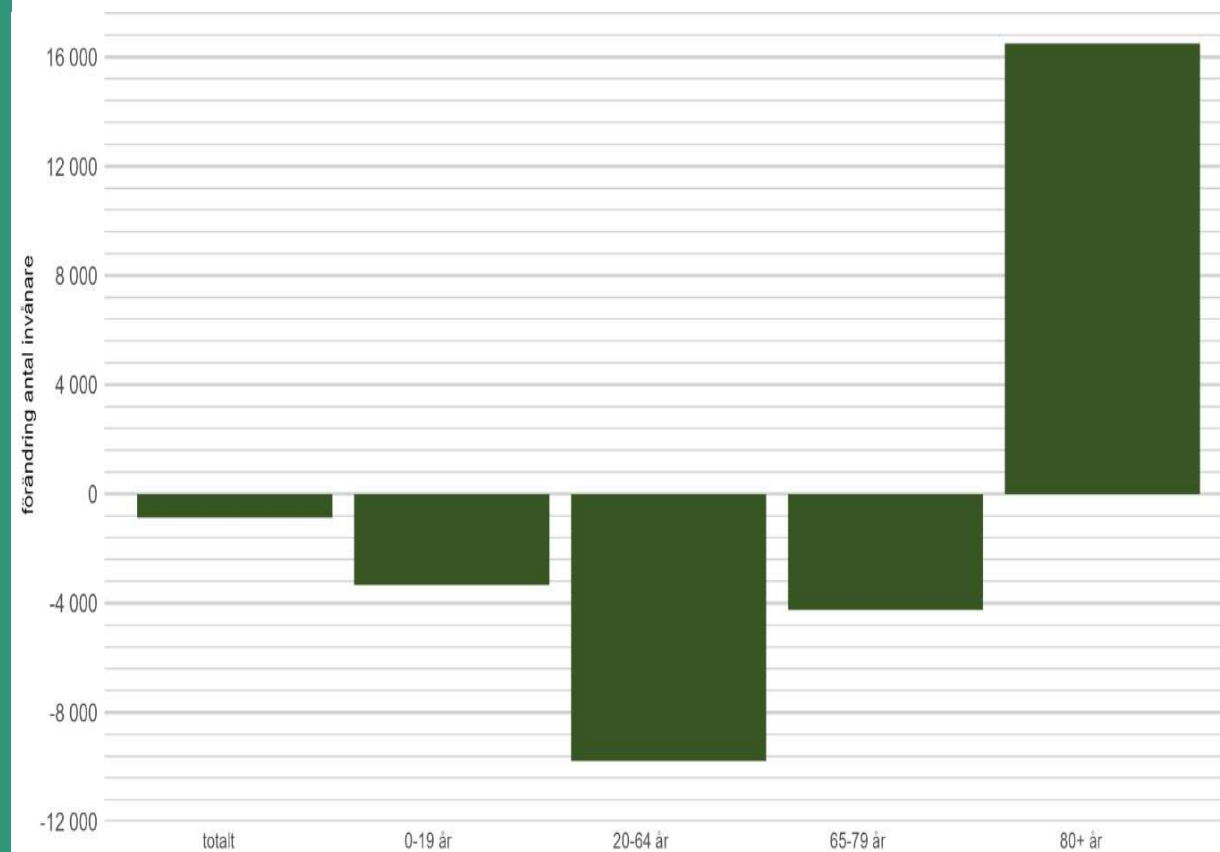


Innlandet Dalarna

Decreasing labour force

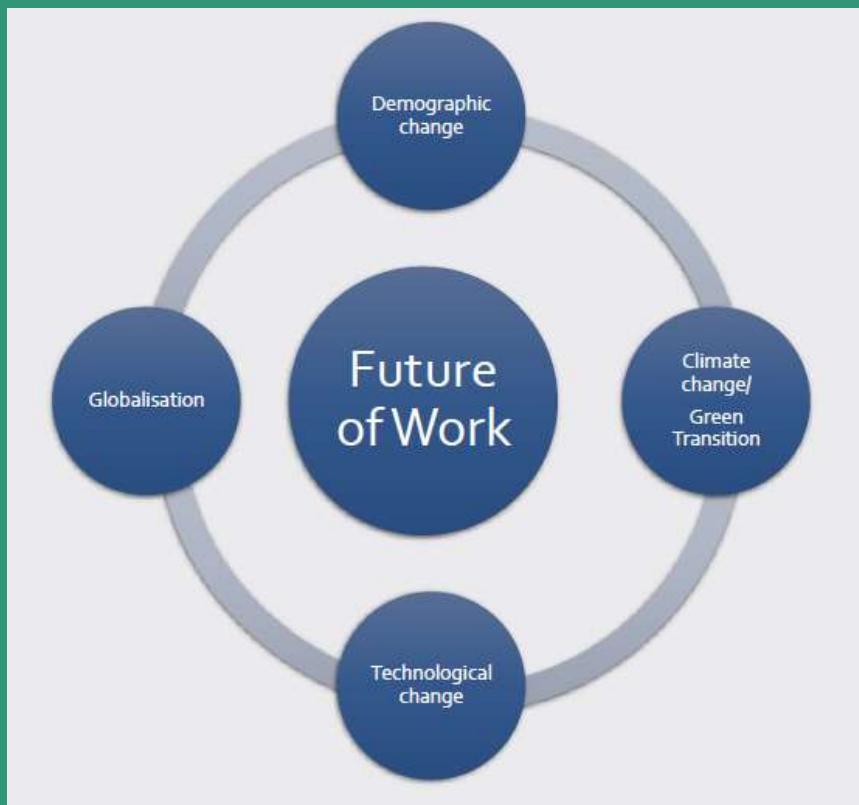
Low depopulation

Projektet demografic change 2021-2031



Källa: SCB:s befolkningsprognos
Bearbetning: Samhällsanalys, Region Dalarna

Innlandet Dalarna



How can we use the border regions assets to improve labour skills and labour supply?

B-solutions project:

Cross border vocational high quality education.

Expert: Kjell Nilsson, Sweden



Innlandet-Dalarna
Samarbete-Gränskommitté

Educational system

What we know:

- Different systems in Norway and Sweden that make combinations difficult
- No administrative or legal obstacles for cross border education
- Very few make use of vocational studies across borders.
- Decreasing educational offers due to few applicants.

(AEBR report on Cross border vocational quality education, june 2021)



Innlandet-Dalarna
Samarbete-Gränskommitté

Task force Torsby municipality:

Study trips to companies for all 7-8 graders

Summer jobs at companies

Remote part time nurse education

Promoting existing educations





Innlandet-Dalarna
Samarbete-Gränskommitté

Career-centers in Innlandet county

Adapting educations to individual skills.

Promoting existing educations.

Promoting educations across borders.

Promoting existing educations





Innlandet-Dalarna
Samarbete-Gränskommité

Company needs

What we know:

- Low unemployment rate
- High need of skilled workers (bioeconomy, snow technicians, ...)
- High number of seasonal workers

(Nordregio report, 2022)



Innlandet-Dalarna
Samarbete-Gränskommité

Snow technicians

Meeting highly specific needs

In collaboration with companies

Distance - part time - practice

New cross border educations





Innlandet-Dalarna
Samarbete-Gränskommité

Education North - Övertoreå

Finland-Sweden-Norway

In cooperation with employment
agency

Adapted to needs of businesses

Adult cross border educations





Innlandet-Dalarna
Samarbete-Gränskommitté

Attracting digital skills

What we know:

- High competition for labour between regions in the Nordic countries
- High number of second home-owners / multi locality
- Small municipalities

(Nordregio report, 2022)



Innlandet-Dalarna
Samarbete-Gränskommité

Place branding and attractiveness

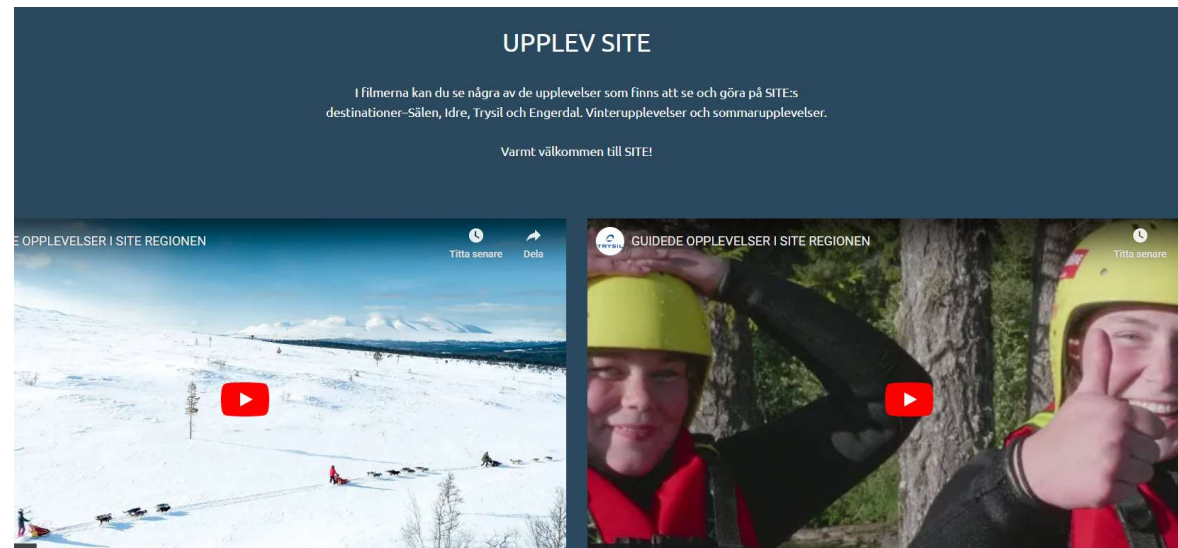
Enjoy SITE-destination

4 border municipals

Mobility solutions

Cross border development plans

Multi locality as an asset





Innlandet-Dalarna
Samarbete-Gränskommité

Place branding and attractiveness

Business Improvement Districts

BID - Torsby

Drone delivery – drone mobility

Welcoming service





Innlandet-Dalarna
Samarbete-Gränskommitté

Thank you!

Jakob Ebner
County Administrative Board of Dalarna
Border Committée Innlandet – Dalarna
Falun, Sweden

Jakob.ebner@lansstyrelsen.se